



Xidi Travel Lodge

Huangshan

Hotel Fact Sheet

Xidi Travel Lodge

Xidi Yi, Huangshan City, Anhui Province, China 245501

Tel : (86-559) 5156 999
Fax : (86-559) 5156 996
webmaster@the-silk-road.com

For reservations, please call us or visit www.the-silk-road.com



Location

Huangshan is easily accessible from cities like Shanghai, Hangzhou and Wuhan via train and air. Xidi Travel Lodge sits on the UNESCO World Heritage site – Xid Village, which is about 46 kilometers from Huangshan Scenic Area and about 50 kilometers from the Huangshan city center. Xidi Travel Lodge's state-green shingle preserves the accent of southern Anhui architecture and completes your cultural experiences. When you enter Xidi Travel Lodge, also known as "Living Dwelling Museum of Ming and Qing dynasties", you will feel the cultural aura of southern Anhui Province.

Nearby attractions include: Huangshan Scenic Area, Xidi Village, Hongcun, Tangyue Memorial Archways, the Bao Family Garden, Qiyun Mountain, Taiping Lake, etc.

From train station : 24 minutes' drive
From Xidi Village : 5 minutes' drive
From Tunxi Airport, Huangshan : about 1.5 hours' drive

Accommodation

Xidi Travel Lodge sits on a cultural property transformed from several southern Anhui residential homes. It consists of 48 nicely decorated guest rooms equipped with modern comfort, located across 6 independent units that capture different local architectural styles combining the south China traditional green garden landscape. The room types are Standard Room, Superior Room, Deluxe/Special Room, and Culture Suite/Executive Suite. Room amenities include:

- Air-conditioning with individual temperature control
- Well-appointed bathroom
- IDD telephone
- LCD TV
- Tea-making facilities
- Hairdryer
- WiFi



Xidi Travel Lodge



Food & Beverages

Restaurant

Our restaurant can accommodate up to 150 guests and offers authentic Huizhou delicacies. The restaurant consists of two themes and private dining areas. Huizhou cuisine is considered as one of the eight famous cuisines of China and it is particularly famous for her ingredients used. The highly distinctive characteristic of Anhui cuisine lies not only in the elaborate choices of cooking materials but also in the strict control of cooking process.

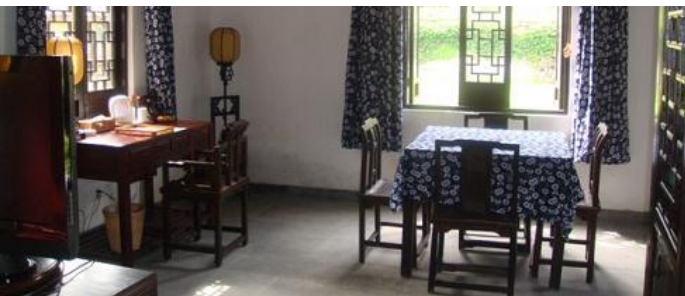
Coffee Shop

The Coffee Shop is a perfect place for you to relax and enjoy breakfast or snack with coffee and tea. The Coffee Shop also offers 24-hours room services and buffet dinners serving special menus frequently.



Other Facilities

- Business Centre
- “The Four Treasures in the Study” Exhibition Hall
- Chinese Arts & Crafts Gallery
- WiFi



Culture hotels are developed with the concept of combining conventional hotel services with elements from our cultural heritage.



Silk Road Hotel Management Co Ltd
www.the-silk-road.com